

TMA

系列射频同轴连接器
SERIES MCX RF.COAXIAL CONNECTORS

TMA是一种中等功率推入式盲配射频同轴连接器, 其界面与TNC相仿, 适用于中等功率场合机箱、机柜的盲插合。

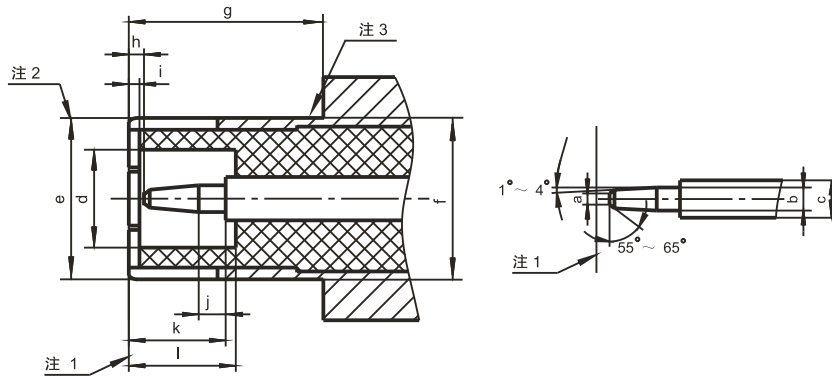
Series TMA RF.Coaxial Connectors are one kind of middle-power blind mating connectors, with snap-on coupling mechanism, The interface conform with TNC. They are suitable for middle-power blindly insert machine box and machine cup board.



主要技术特性		KEY PERFORMANCE	
温度范围 Temperature range	-65 ~ +125℃	工作电压 Voltage rating	500V(rms)
特性阻抗 Characteristic Impedance	50Ω	绝缘电阻 Insulation resistance	5000MΩ min
频率范围 Frequency range	DC ~ 6 GHz	介质耐压 Dielectric Withstanding voltage	1500V(rms)
电压驻波比 VSWR	1.30	寿命 Durability	500 Cycles
中心导体 Center conductor	0.002 Ω max	外导体 Outer conductor	0.002 Ω max

头部配合尺寸

INTERFACE MATING DIMENSIONS



Ref	mm		in		注
		max	min	max	
a	-	0.64	-	0.025	直径
b	1.32	1.37	0.052	0.054	直径
c	2.06	2.21	0.081	0.087	直径
d	4.83	-	0.190	-	直径
e	-	-	-	-	2/直径
f	8.00	8.05	0.315	0.317	直径
g	8.60	-	0.339	-	
h	0.08	1.02	0.003	0.040	
i	0.15	-	0.006	-	
j	1.98	-	0.078	-	
k	5.33	5.84	0.210	0.230	
l	5.28	5.79	0.208	0.228	

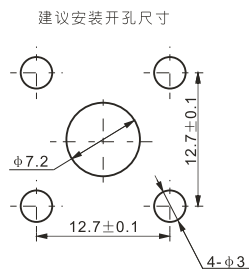
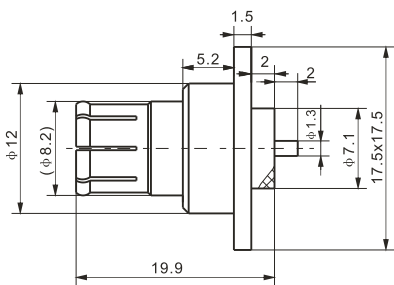
注1 机械和电气基准面。

注2 开槽及涨口满足电气和机械性能要求。

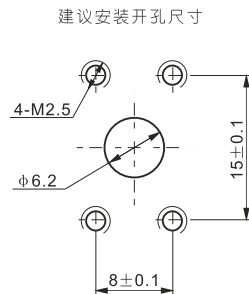
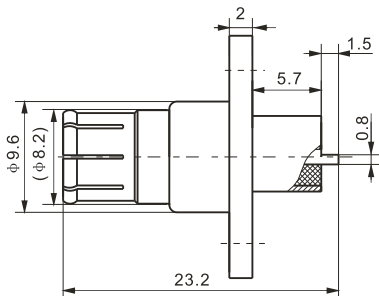
注3 密封件的设计及定位任意，应保证能满足环境性能要求。



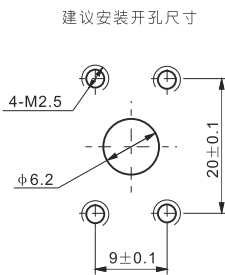
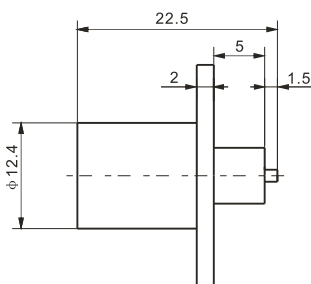
TMA-JFD5



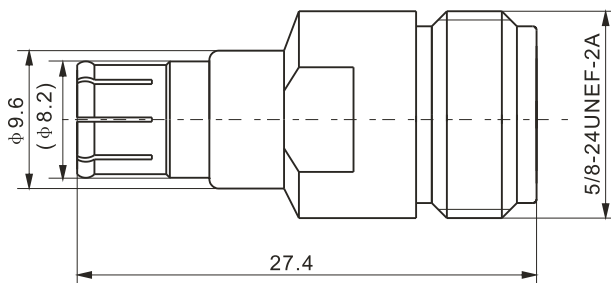
TMA-JFD6



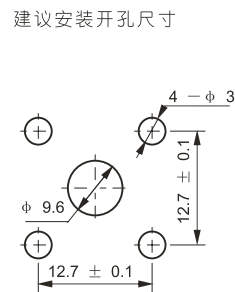
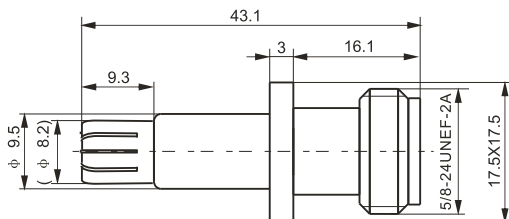
TMA-KFD1



N/TMA-KJ

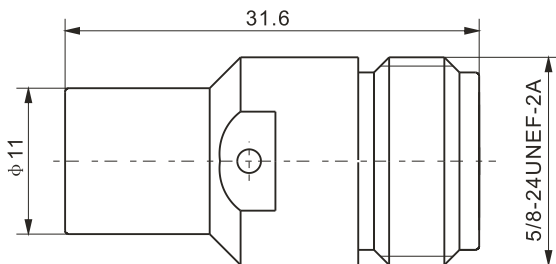


N/TMA-KFJ

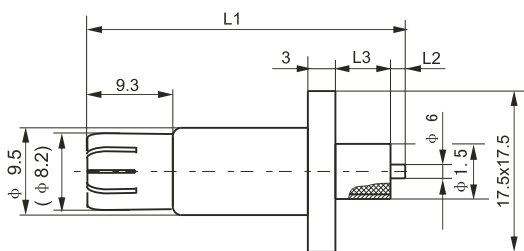




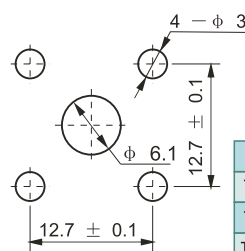
N/TMA-KK



TMA-JFD 等



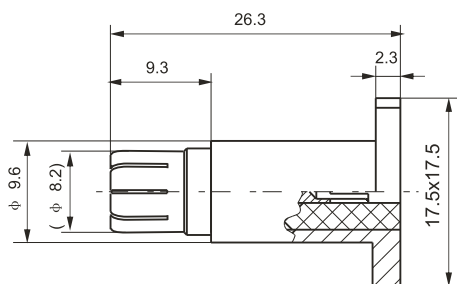
建议安装开孔尺寸



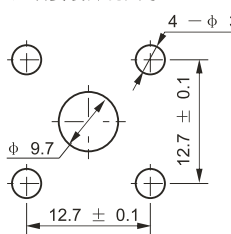
Type	L1	L2	L3
TMA-JFD	34.6	(1.6)	6
TMA-JFD1	33.8	(2)	4.8
TMA-JFD2	36.3	(2)	7.3



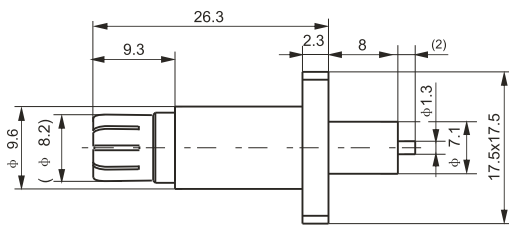
TMA-JFD3



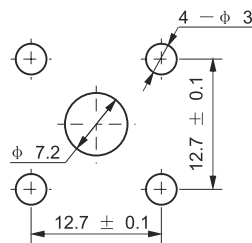
建议安装开孔尺寸



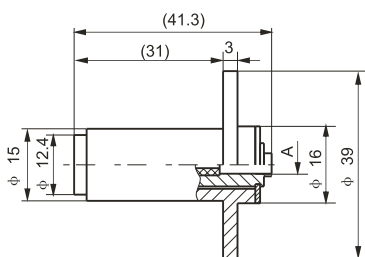
TMA-JFD4



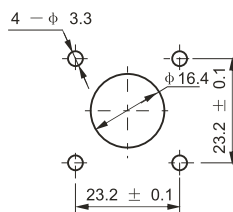
建议安装开孔尺寸



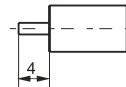
TMA-KFB3等



建议安装开孔尺寸



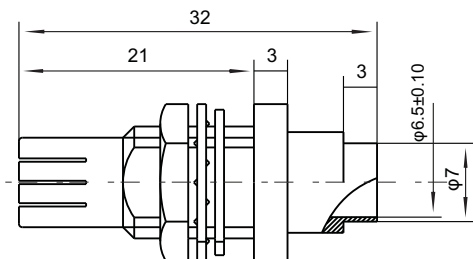
电缆剥线尺寸



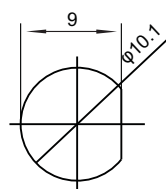
Type	A	Cable type
TMA-KFB3	phi 3.7	SFT-50-3
TMA-KFB5	phi 6.1	SFT-50-5.2
TMA-KFB5-1	phi 6.45	EZ250-SP



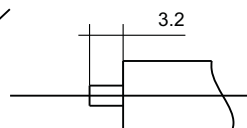
TMA-JYB5



安装开孔尺寸



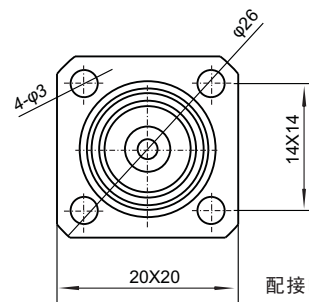
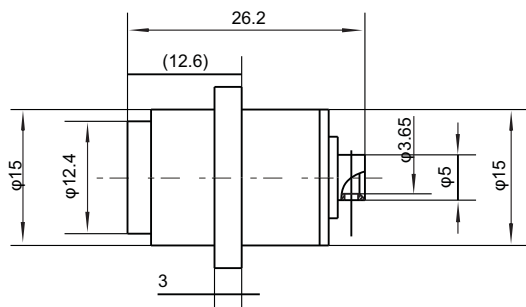
剥线尺寸



配接电缆: RG401



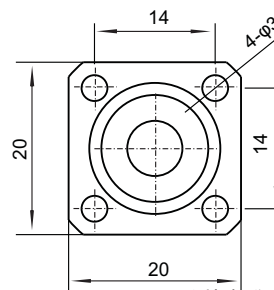
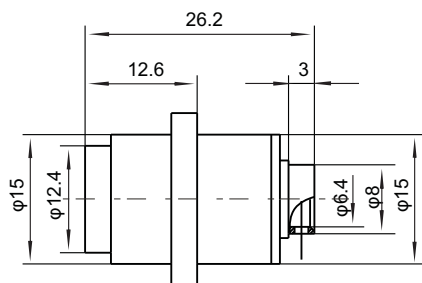
TMA-KFB3B-1



配接电缆: RG402



TMA-KFB5



配接电缆: RG401半钢或半柔电缆